

# CBE Rental Information 2026-27

To rent space at CBE, you must be a member. If you are interested in renting space contact Rana Bickel, rbickel@cbebk.org, (718) 768-3814 x226.

## RATES AND CAPACITY

### Ballroom

- Seated Capacity: 250 at tables or 300 assembly
- Square Footage: 4,415 sq ft
- Rental Rate: **\$6,000**

### Social Hall

- Seated capacity: 100 at tables or 150 assembly
- Square Footage: 1,632 usable sq ft
- Rental rate: **\$2,600**

### Lobby

- Seated capacity: 50 at tables or 125 assembly
- Square Footage: 1,203 sq ft
- Rental rate: **\$2,400**

### Boardroom

- Seated capacity: 40 at tables or 50 assembly
- Square Footage: 742 sq ft
- Rental rate: **\$1,600**

## ADDITIONAL FEES

- \$500 additional fee for Friday and Saturday evenings
- \$500 fee per half-hour for rentals that go beyond contracted time

## WHAT'S INCLUDED?

- Setup and breakdown of tables and chairs
- 60-inch round tables (25 available)
- 8-foot rectangular tables (12 available)
- 6-foot rectangular tables (12 available)
- 24-inch (27-36 inch adjustable height) Low Boys (5 available)
- 30-inch (42-inch height) High Boys (8 available)
- Black plastic folding chairs (250 available)
- Coat Racks
- **CBE's kitchen allows for prepping, warming, and plating of food, but does not have an oven or stove.**

## WHAT'S NOT INCLUDED?

**The following services are not provided by CBE:**

- Event planning and same day management
- Catering
- Flowers and decorations
- Table linens, dining ware, utensils
- Audio/visual equipment, music, tech support

**NOTE:** Because CBE operates a preschool, **we have limited time windows available for delivery and pickup of rental items on Fridays, 10:00-11:30 AM and 4:00-6:00 PM.**

# Suggested Vendors

Highly recommended vendors who are familiar with CBE and our spaces.

## Sahadi's

Middle Eastern Cuisine  
(718) 788-7500  
[catering.ic@sahadis.com](mailto:catering.ic@sahadis.com)

## Shelsky's

(718) 855-8817  
[catering@shelskys.com](mailto:catering@shelskys.com)

## La Bagel Delight

(718) 768-6107  
[labagel delight284@gmail.com](mailto:labagel delight284@gmail.com)

## Catering

### Simply Divine

Kosher  
(917) 553-7510  
[jmarlow@simplydivine.com](mailto:jmarlow@simplydivine.com)

### Esprit Events

Kosher  
(212) 207-3888  
[info@espritevents.com](mailto:info@espritevents.com)

### Sugar Butter Chocolate

Desserts  
(718) 210-2697  
[daniel@sugarbutterchocolate.com](mailto:daniel@sugarbutterchocolate.com)



### Buttermilk Bakeshop

(347) 987-3941  
<https://buttermilkbakeshop.com/>

## Event Planning

### Kerry Muldoon

(732) 257-8580  
[kerryannmuldoon@gmail.com](mailto:kerryannmuldoon@gmail.com)

### Plan-it Vicki

(860) 402-4033  
[events@plan-itvicki.com](mailto:events@plan-itvicki.com)



### Simply Divine (Judy Marlow)

(917) 553-7510  
[jmarlow@simplydivine.com](mailto:jmarlow@simplydivine.com)

### Andrea Adelstein, NYLux Events

(201) 370-6506  
[andrea@nyluxevents.com](mailto:andrea@nyluxevents.com)

### Esprit Events

(212) 207-3888  
[info@espritevents.com](mailto:info@espritevents.com)

## Audio/Visual Production and Lighting



### Dave Overcamp

(917) 279-8736  
[overcamp@gmail.com](mailto:overcamp@gmail.com)

### Fusion Productions

(516) 626-2255  
[marcus@fusionproductions.biz](mailto:marcus@fusionproductions.biz)

### Trio Productions

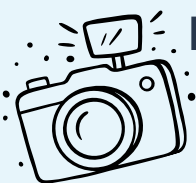
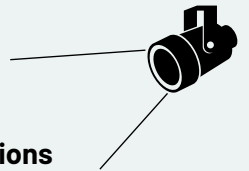
(718) 370-6776  
[info@triodjs.com](mailto:info@triodjs.com)

### Jason Zaplin Productions

(973) 868-1579  
<https://zaplinproductions.com/>

### Soundhouse NYC

(888) 826-1299  
[rentals@soundhousenyc.com](mailto:rentals@soundhousenyc.com)



## Photographers

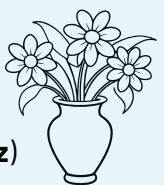
### Julie Markes

(917) 224-2859  
[juliemarkesphotography.com](mailto:juliemarkesphotography.com)

### Marc Goldberg

(917) 746-5348  
[marcgoldbergphotography.com](mailto:marcgoldbergphotography.com)

## Florists



### The Rose Garden (Miguel Gomez)

(646) 270-7587  
[therosegarden346@gmail.com](mailto:therosegarden346@gmail.com)

### Zuzu's Petals

(718) 638-0918  
[zuzusbrooklyn@gmail.com](mailto:zuzusbrooklyn@gmail.com)